

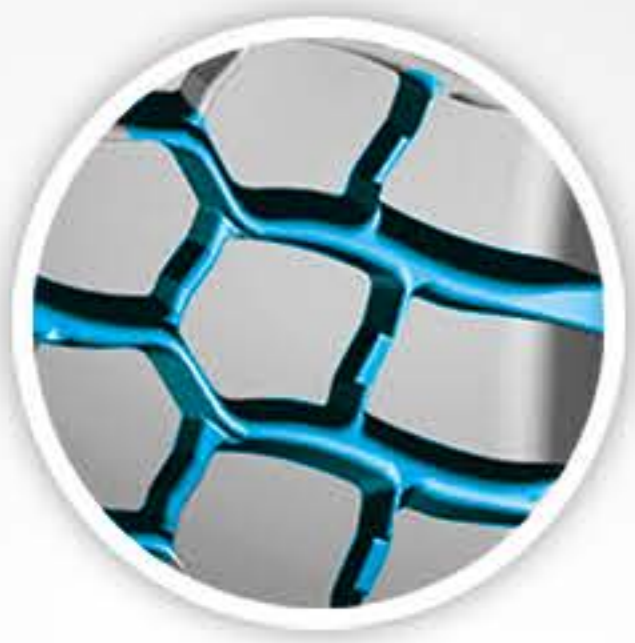


Time Proved ADT Tire with  
**Excellent  
Traction**

**7+** Years OE Service  
for Moxy(**DOOSAN**) ADT

**ADT**





### Suitable for wet & muddy road and preventing slide skidding

Vertical & Horizontal Groove Design



### Better puncture & impact resistance performance

Strengthen Steel Belts Design & 7 safety Coefficient Casing Ply Design



### Longer mileage

Bigger Footprint Design for better wearing resistance performance

## 23.5R25 ETADT Field Report from Underground Zinc Mine, Brazil



The first tire life of 23.5R25 ETADT is 1500~1600 hrs, as same as Brand B, and it can be retreaded twice.

General Information	
Vehicle Name	VOLVO A30F
Tire Size & Pattern	23.5R25 ETADT
Original Tread Depth	47 mm
First Tire Life	<b>1500-1600 hrs</b>
Retreaded Times	<b>2 times</b>
Working Condition	The road condition of is very bad, the depth of some area is 0.5m
One-way Distance	2 km
Mine Type	Zinc

Equipment	Size	Pattern	Position	Serial No.	Tread Depth
VOLVO A30F #29	23.5R25	ETADT	1	D160707A3001	15/15
		TK RETREAD	2	TK RETREAD	39/39.5
		ETADT	4	D170108B1201	24/26
		VLT	5	S6YCK0141	10.5/12
		ETADT	6	D161121C0401	22.5/24.5
VOLVO A30F #39	23.5R25	VLT	1	S6ECK0023	18.5/18
		ETADT	2	D170111B1201	30.5/30.5
		ETADT	4	D170105B1201	29.5/29
		TK RETREAD	5	TK RETREAD	26/26
		TK RETREAD	6	TK RETREAD	23/26

Size	TRA Code	Star Rating	Rim Width & Flange	Tread Depth		Load Index/ Speed Symbol	Type	Compound
				32nds	mm			
23.5R25	E4	★★	19.50-2.5	59	47	185 B	TL	H2/CS
26.5R25	E4	★★	22.00-3.0	64	50.5	193 B	TL	H2/CS
29.5R25	E4	★★	25.00-3.5	70	55.5	200 B	TL	H2/CS
29.5R29	E4	★★	25.00-3.5	70	55.5	202 B	TL	H2/CS
600/65R25	E3/L3	★★	19.50-2.5	43	34.5	178 B/187 A2	TL	H2/R1
650/65R25	E3/L3	★★	19.50-2.5	47	37	180 B/193 A2	TL	H2/C1/R1
750/65R25	E3/L3	★★	24.00-3.0	54	43	190 B/202 A2	TL	H2/CS/R1
875/65R29	E3/L3	★★	28.00-3.5	64	51	203 B/214 A2	TL	R1