

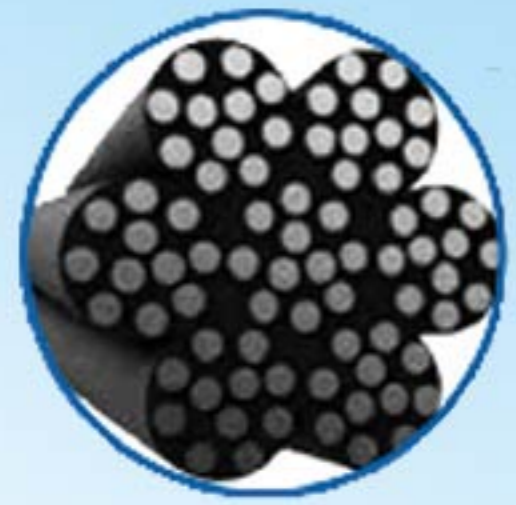


# Customized Crane Tire with Breakthrough R&D Technology

OE Approved by Global OE Manufacturers,  
Terex, Sany, Zoomlion



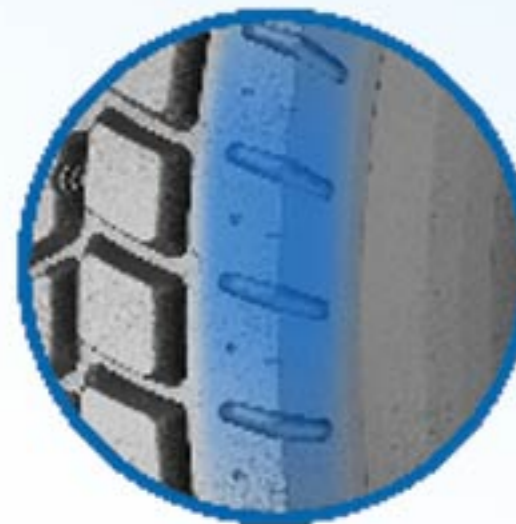
CRANE 



**+10% durability increase by improving twisting method**  
**+36% improvement of impact resistance**  
 +5% strength improvement of single steel cord



**Better operational stability with more uniform force distribution**  
 The force on the shoulder balances the force on the crown, which improving the wear resistance of the crown



**Minimized irregular wear**  
 Semi-closed Shoulder Design effectively reduces the irregular wear

## ☆ 445/95R25 ETCRANE field report from Holland

General Information	
Vehicle	TADANO Mobile Crane
Tire Size & Pattern	445/95R25 ETCRANE
Compound	H1
Original Tread Depth	24 mm
Average Remaining Tread Depth	18mm
Current Working Distance	41522 kms
Average Projected Tyre Life	131432.40 kms
Working Condition	Construction, Highway



### All Terrain Crane / TADANO

Size	Pattern	Position	Serial Number	Tread Depth(mm)		Load Capacity (KGS)	Working Kilometers	Wear Rate (kms/mm)	Projected Tyre Life (kms)
				Original	Remaining				
445/95R25	ETCRANE	FL	D160720A2101	25	23/24	6700	N/A	N/A	N/A
445/95R25	ETCRANE	FR	D150410B2201	25	15/15	6700	41522	4152.20	83044
445/95R25	ETCRANE	ML	D150410C2201	25	18/18	6700	41522	5931.70	118634
445/95R25	ETCRANE	MR	D150116C2201	25	19/19	6700	41522	6920.30	138406
445/95R25	ETCRANE	RL	D150410A2203	25	19/20	6700	41522	7549.50	150990
445/95R25	ETCRANE	RR	D150116C2203	25	20/20	6700	41522	8304.40	166088

★ The average tyre life of ETCRANE can reach **131432.40kms**, which means at least **6.5** years without having problems.

Size	TRA Code	Star Rating	Rim Width & Flange	Tread Depth		Load Index/ Speed Symbol	Type	Compound
				32nds	mm			
385/95R24	E2	★★★★	10.00W	28	22	170 F	TT	H1
385/95R25	E2	★★★★	10.00-1.5	28	22	170 F/170 G	TL	H1
445/95R25	E2	★★★★	11.25-2.0	31	25	174 F	TL	H1
445/80R25	E2	★★★★	14.00-1.5	31	25	170 F	TL	H1