

# Design for Airport Rescue & Firefighting Vehicle



**SPECIAL**



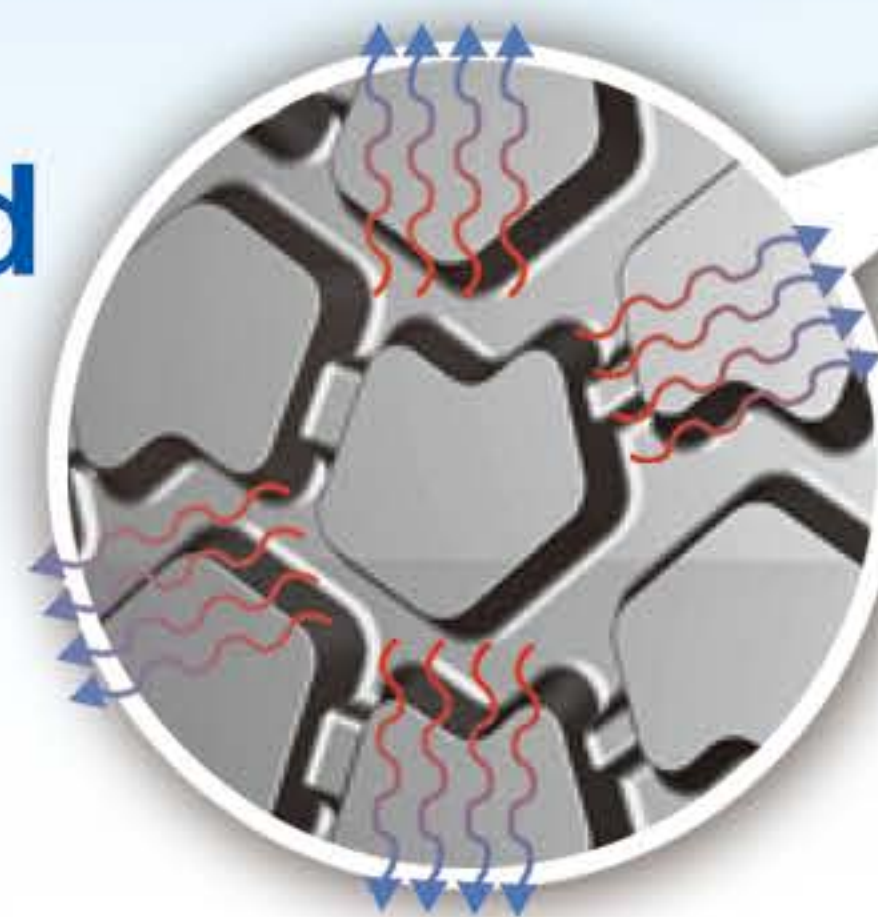
☆ **Providing better traction capacity and more stable controllability at high speed**  
by Block Bridge Design



☆ **Better ground gripping capacity when sprinting or braking**  
Climbing Boots Design



☆ **Less heat generation and better heat dissipation performance at high speed**  
Small Block Design



**24.00R21 ETMT with Oshkosh fire truck in USA**

Size	TRA Code	Star Rating	Rim Width & Flange	Tread Depth		Load Index/ Speed Symbol	Type	Compound
				32nds	mm			
24R21	E7	16	18.00-1.5	29	23	176 G	TL	H1