

# E4 Design Tire

## for Mining Truck

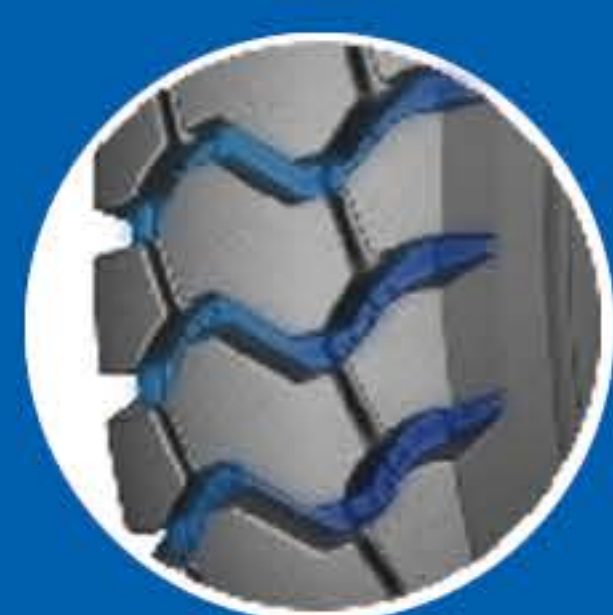


MINING TRUCK



### Longer Service Life & Lower

- S-shaped big block design. The pattern saturation will increase by 5% when tread wears 5mm, which will effectively resist cutting and increase tire life



### Higher Working Efficiency

- 32° Polyline groove design for better self-cleaning performance and traction capacity, which helps increase efficiency.



### Better Heavy Load Capacity

- Ultra high-tensile steel wires from renowned supplier form reinforced carcass with higher load capacity.



ETRTV

Size	TRA Code	Star Rating	Rim Width & Flange	Tread Depth		Load Index/ Speed Symbol	Type	Compound
				32nds	mm			
16.00R25	E4	★★★	11.25-2.0	53	42	180 B/193 A6	TT/TL	C1/CS