

# 12 YEARS' PROVED PRODUCT

Excellent Field Performance  
in Asia & South America  
Market



**160%**  
Max. Load  
Capacity



**100%**  
Off Road

FOCUS ON MINING & CONSTRUCTION INDUSTRY

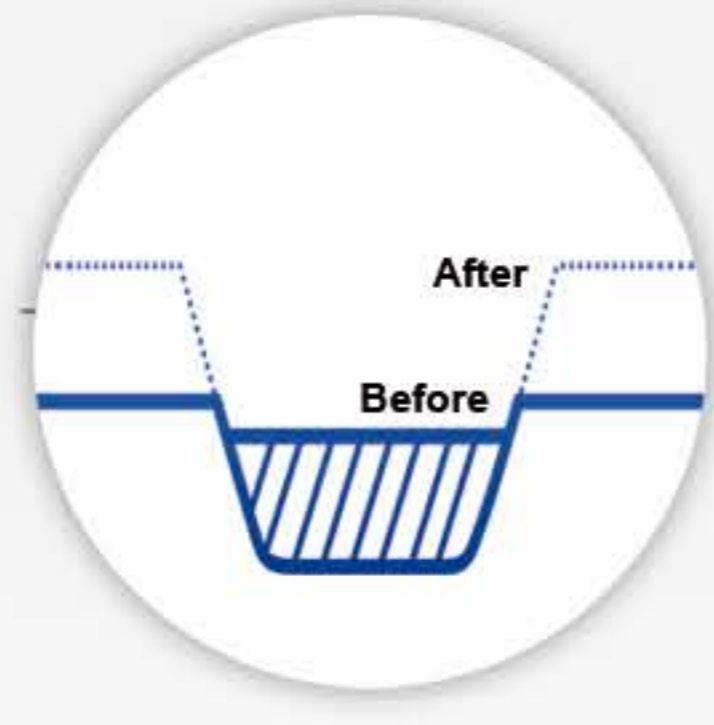
# OFF ROAD



☆ **Stable performance on severe road condition**



Super Stiff Design  
**15%** Thicker Design than normal design



**35%** Deeper Design than normal design



**10%** Wider Tread Design than normal design



**300%** Deeper Under-groove Rubber Design than normal design

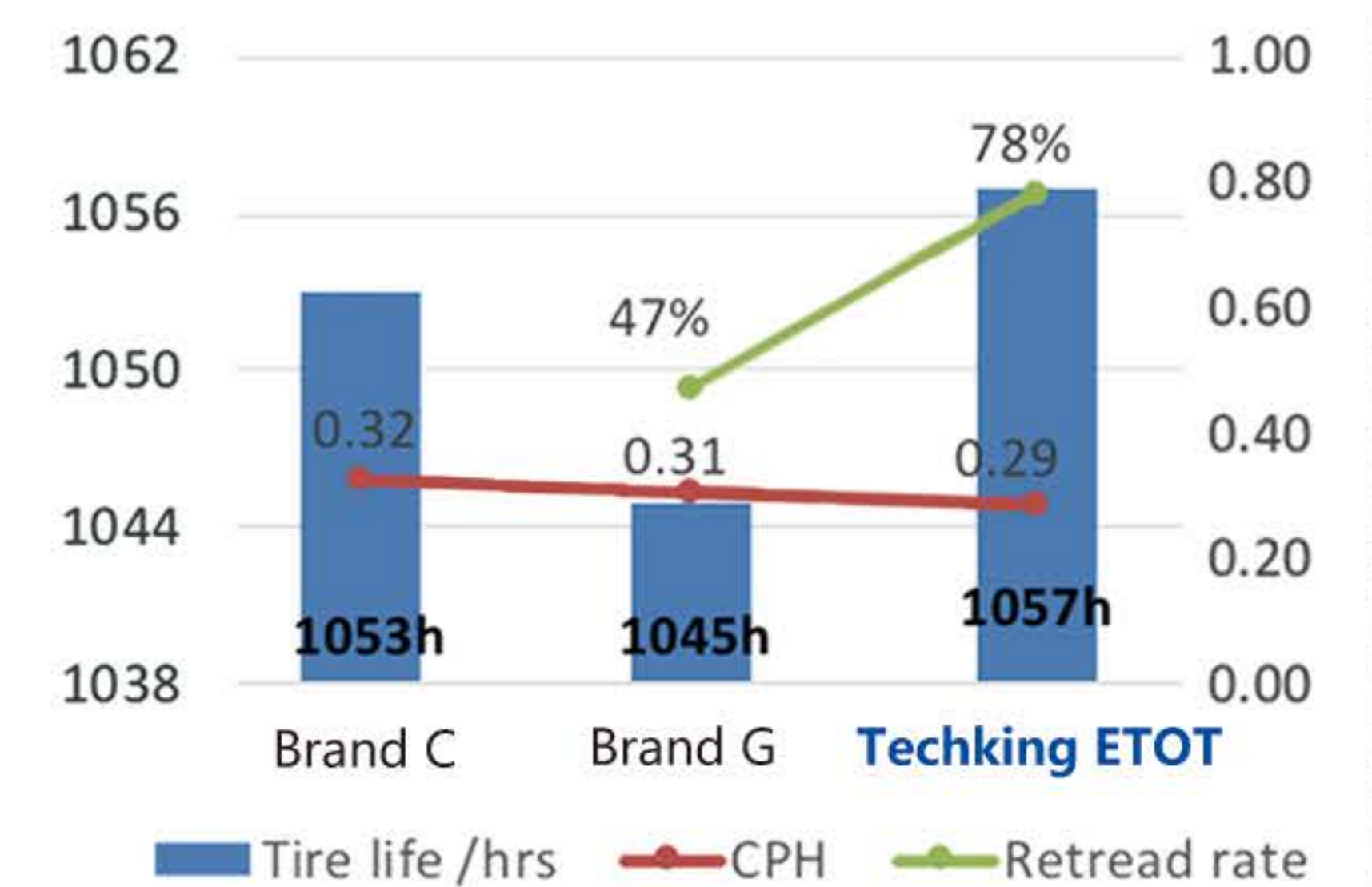
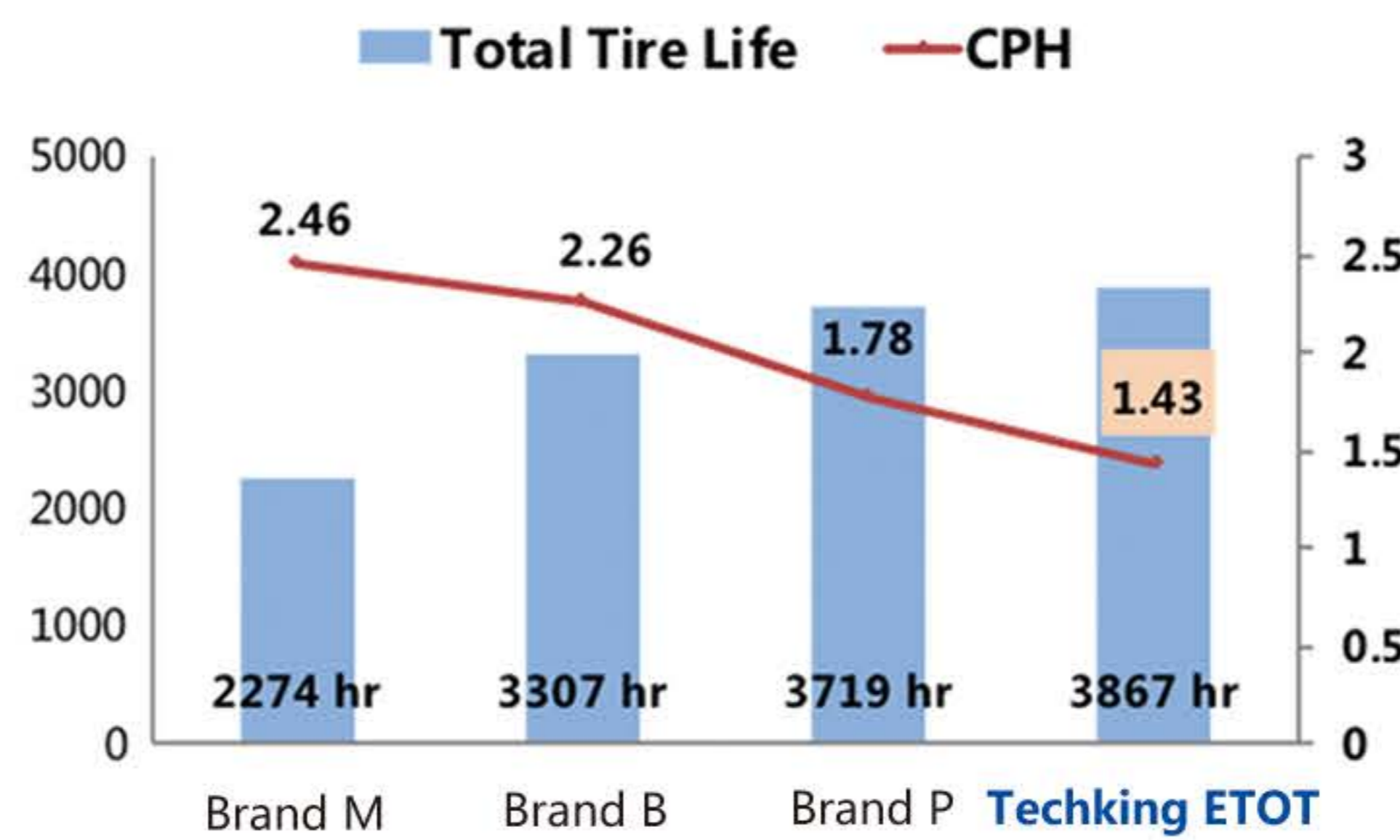
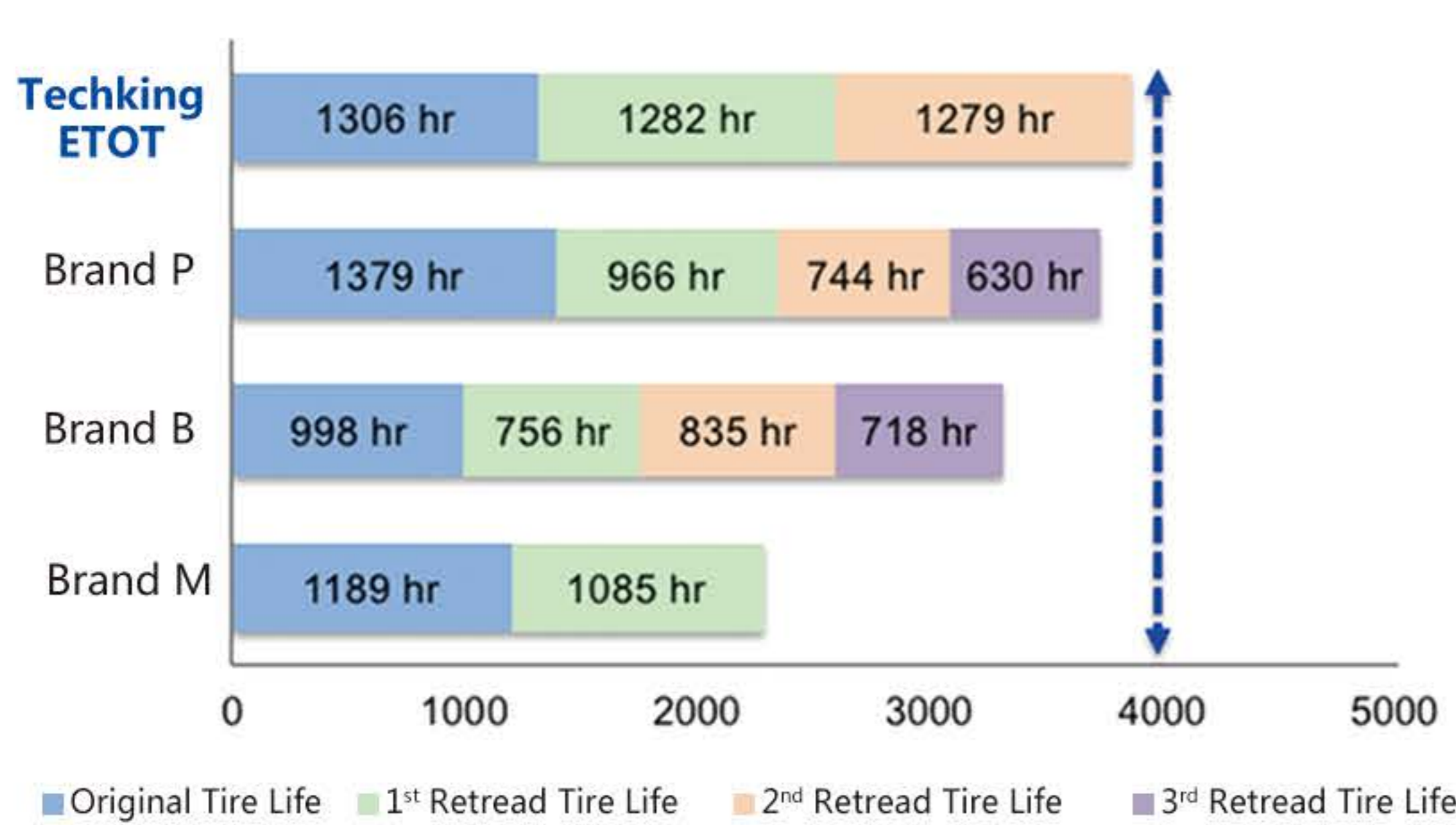
☆ **Excellent retread capacity**

☆ **Cut & Chip Resistance Compound**

**12.00R24 ETOT Field Performance from Brazil**



General Information	
Truck Type	Scania G440
Vehicle Model	2DD & 22DD
Tire Size & Pattern	12.00R24 ETOT
Max Load Speed	40 km/h
One-way Distance	24 km
Original Tread Depth	32 mm
Remaining Tread Depth	13 mm
Average the 1 <sup>st</sup> Tire Life	1057 hrs
Retread rate	78%
Working Condition	Iron mine



- According to the feedback, the carcass of ETOT tires are strong and can be retreaded twice.
- Under the same working condition, the total tire life of Techking 12.00R24 ETOT is the longest, and also the CPH is the lowest.

Size	PR	Tread Depth (mm)	LI & SS	Load Capacity (kg)		Max. Load Capacity (kg)	Standard Pressure (kPa)	Type
				Single	Dual			
11.00R20	16	32	150/147B	3350	3075	6400	830	TT
11.00R20	22	32	160/156B	4500	4000	6400	930	TT
12.00R20	22	32	162/158B	4750	4250	6800	930	TT
12.00R20	20	32	156/153B	4000	3650	6800	900	TT
12.00R24	20	32	160/156F	4500	4000	7400	850	TT
12.00R24	24	32	164/161B	5000	4625	7400	900	TT

\* Max. Speed < 50km/h